



ENVI800 Range: Specialised Scale Control

ENVI800 has been specifically manufactured for hot water dispensing equipment that requires high capacity scale control and chlorine reduction, without severely reducing the pH value of the feedwater. ENVI800 is an excellent choice in high usage areas with Vending & traditional espresso Machines as well as combination ovens and water boilers.

- ✓ Tailored for commercial use.
- ✓ Chlorine reduction - taste and odour enhancement.
- ✓ Prevents scale build up.
- ✓ Ideal for boiling water tanks, coffee machines, steam ovens and more.



ENVI800 is specifically developed for use in commercial applications and utilizes Aqua Cure's unique refill insert technology to reduce cost and help the environment by reducing plastic wastage, when compared to other brands that offer similar solutions.

Benefits and Applications

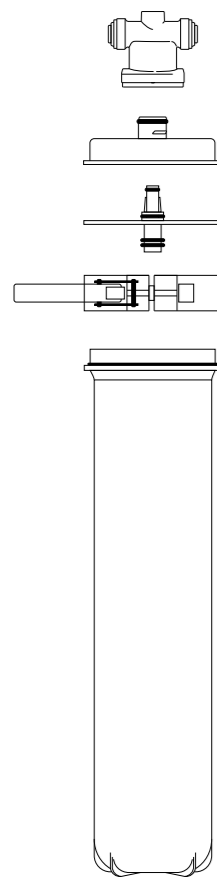
Ion exchange resin cartridge

ENVI800 is particularly suited for Hot or Boiling water applications where there is a need to prevent scale build up thereby reducing servicing costs. The carbon block reduces chlorine levels and improves taste and odour of the water.

Certification

ENVI800 Filter housing is certified to NSF standard 42 for microbiological safety and structural integrity:

- Burst pressure of 400 psi
- Hydrostatic to 375 psi for 15 mins
- Cycle testing from 0 - 150 psi 100,000 times



Specifications

Housing Construction

FDA approved polypropylene with 10% talc

Capacity

10000 litres
(Scale removal at 180ppm)

Operating Temperature Range

4°C – 40°C / 39°F - 104°F

Flow Rate

Max. 6 lpm

Dimensions without Head

H:590mm x W:220mm

Media Type

Carbon & Ion Exchange resin based

Max Operating Pressure

8.5 Bar / 120 psi

Water Inflow Temperature Range

4°C – 40°C / 39°F - 104°F

Micron Rating

1 micron

Mounting Orientation

Vertical

NOTES:

Performance capacity depends on system design, mains pressure and flow rate, incoming water parameters and certain other application conditions.

After installation, flush the cartridge for 30 seconds to remove fines before using the water and again after a period of no usage. Estimated capacity using 2 ppm free available chlorine at 0.5 ppm breakthrough.

WARNING:

Only use with potable water.

Do not use with water that is of unknown quality without adequate disinfection before or after the system

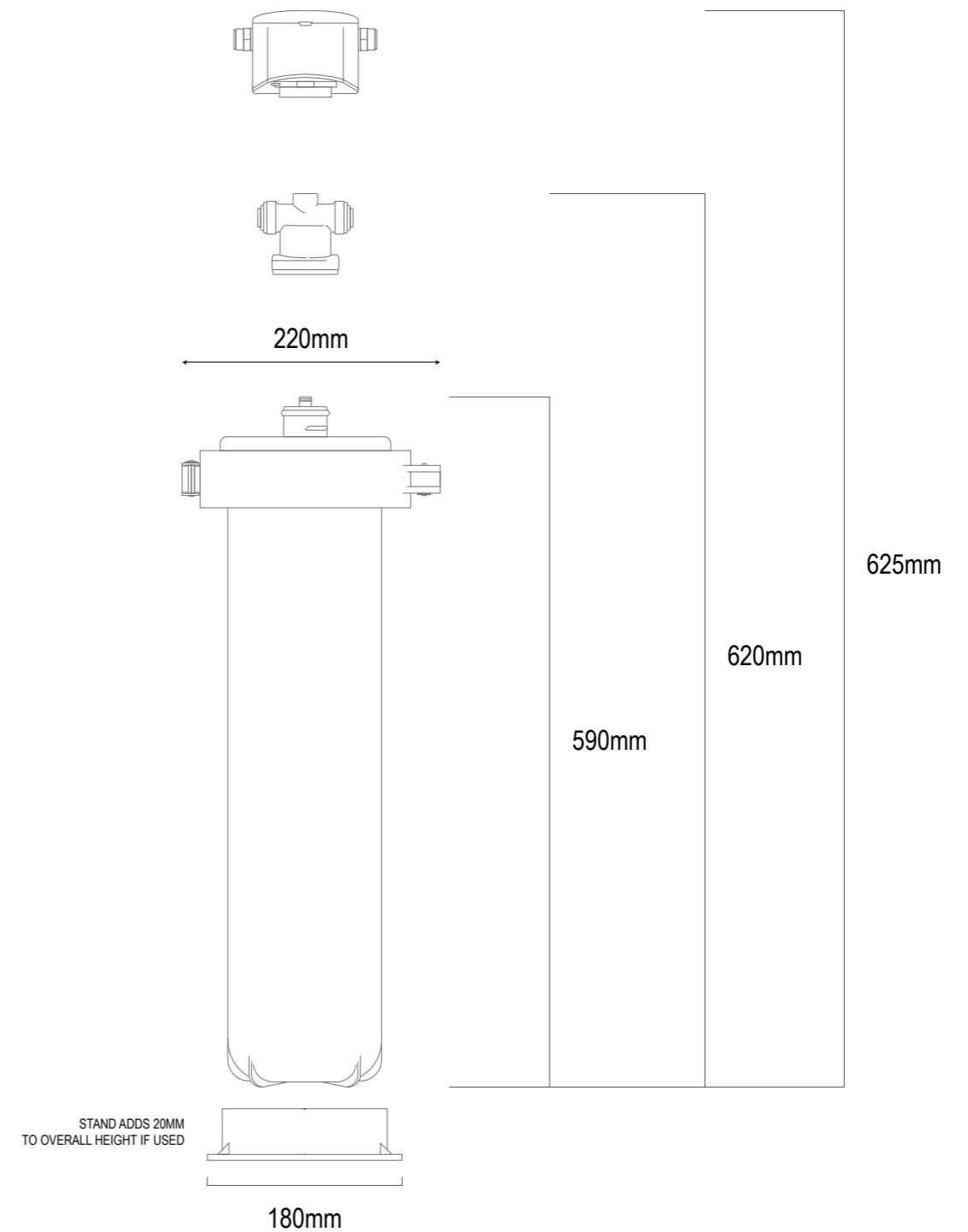
Product Code	System Type
ENVI80038*	enviro+ 800 System + 3/8PF Head (with scale removal insert)
ENVI80038V**	enviro+ 800 System + 3/8PF Head (with scale removal insert)

*30% fixed bypass filter head

**Variable bypass filter head

Product Code	Media Type	Sediment	Chlorine Reduction	Scale Protection
800CART	Resin/Carbon Riser (1m)	✓	✓	✓

m = micron rating



Changing Insert

1. Turn off water supply to enviro+ filter system.
2. Detach housing from head by making a 1/4 turn anti-clockwise, release the bracket by pulling the lever to the right, unclip the bracket from the housing and remove cap.
3. Remove filter mount from top of cartridge and drain any excess water from the housing.
4. Remove the used cartridge from the housing using the inbuilt handle.
5. Fit the new cartridge onto mount by pushing it onto the cartridge until you can no longer see the black o-rings and you feel resistance. Place the cartridge and mount back into housing.
6. Re-fit the cap, align bracket with the cap rim and lock by pulling lever to the left. Re-fit housing to head and making a 1/4 turn clockwise until the housing locks.
7. Turn on water supply and flush for a min of 20 litres.

