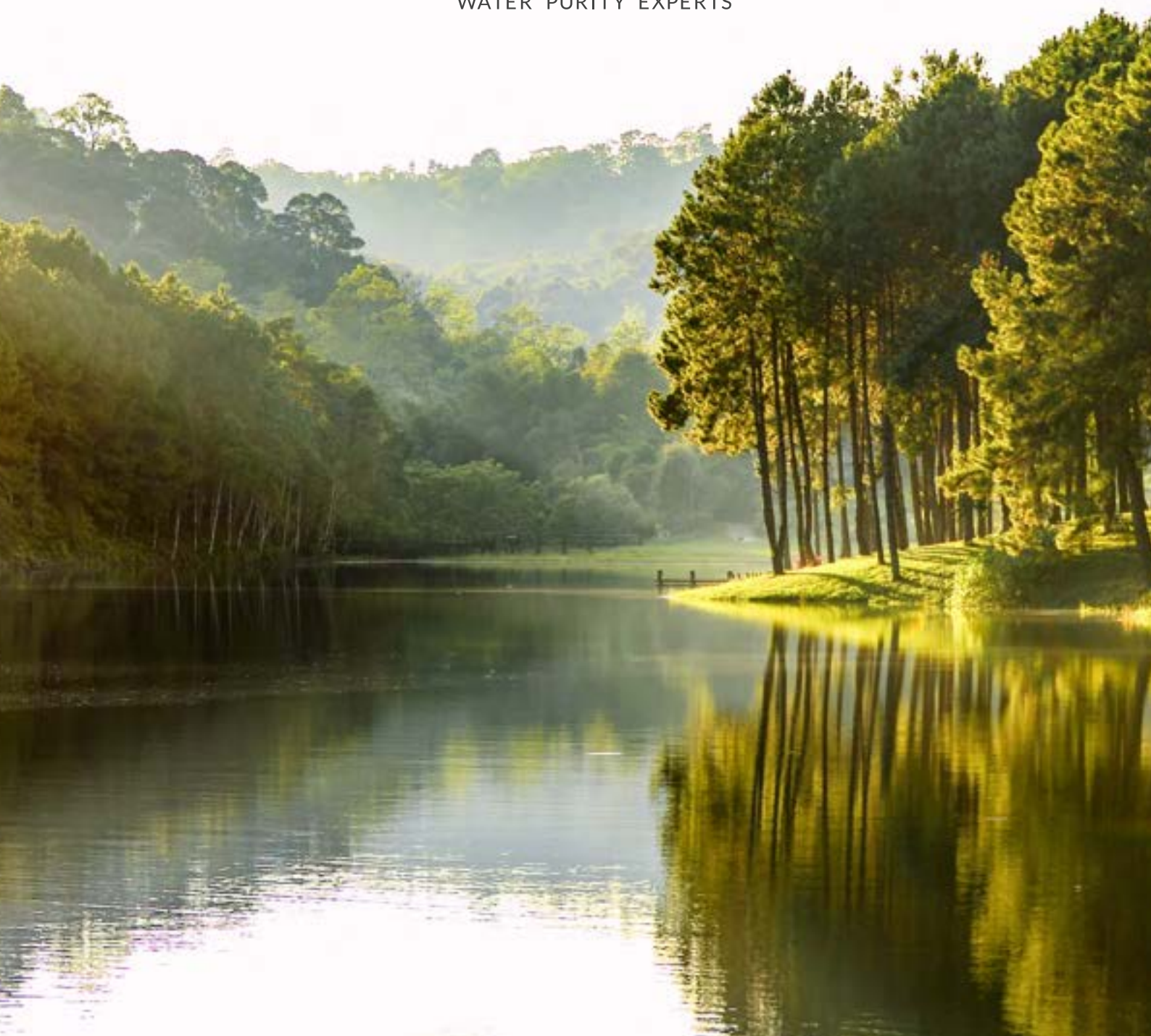




Part of The **HYDRO+** Family

Experts In **Sustainable**
Water **Filtration**

Pure Water, Pure Conscience.





Welcome to Aqua Cure

Home of 

At Aqua Cure, our unwavering commitment is to provide you with the most comprehensive selection of water treatment solutions. Aqua Cure offers an easy-to-use, one-stop-shop approach, backed by expert technical support and many decades of experience in the water treatment industry.



Manufacturing Excellence

In the heart of Burscough, Lancashire, lies our state-of-the-art manufacturing facility and the home of Hydro+. Carrying a wide array of industry certifications and operating to ISO9001:2015, our manufacturing processes are designed to minimize water and energy consumption whilst maintaining high levels of product quality.





A Range for Every Need

Discover our innovative Enviro+ series, designed to meet your water treatment needs with enhanced sustainability in mind. Choose from the following ranges:

Welcome to Enviro+

We understand the importance of crystal-clear water and a clearer conscience, so we proudly present the Enviro+ range from Aqua Cure. This range is an extension of our renowned Hydro+ range and is branded as Enviro+ to signify its enhanced sustainability.



ENVI100 & 200

Suitable for the following equipment types;

- ✓ Residential undersink.
- ✓ Water dispensing.
- ✓ Water Boiler.



ENVI300 & 500

Suitable for the following equipment types;

- ✓ Vending Coffee.
- ✓ Traditional Espresso.
- ✓ Water Boiler.



ENVI600 & 800

Suitable for the following equipment types;

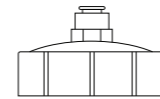
- ✓ Vending Coffee.
- ✓ Traditional Espresso.
- ✓ Water Boiler.



ENVI100 Range: Compact and Efficient Commercial & Residential Solutions

Introducing the ENVI100 Range, designed with precision to meet commercial and residential needs. Their offerings encompass sustainable and budget-friendly filtration solutions, with the choice to prevent scale buildup in hot water systems and effectively eliminate impurities for improved water quality, making them an essential asset.

- ✓ Residential convenience.
- ✓ High-capacity filtration.
- ✓ 99% contaminant removal.
- ✓ Easy installation.



Housing Construction
FDA approved polypropylene with 10% talc

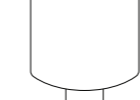
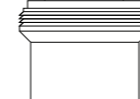
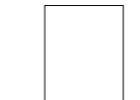
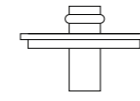
Head Options
N/A

Max Operating Pressure
8.5 Bar / 120 psi

Water inflow temperature range
4°C - 40°C / 39°F - 104°F

Micron Rating
Depending on Media - Range from 0.2 to 5 micron

Dimensions
265mm H x 75mm W



Media Type
Carbon media with or without Slowphos® beads

Capacity
Dependant on media choice : 1,100 Litres to 19,000 litres

Operating Temperature range
4°C - 40°C / 39°F - 104°F

Flow Rate
1.9 lpm / 0.5 USG per minute

Weight dry, wet
0.4kg, 0.5kg / 0.8lbs, 1.1lbs approx.

Mounting Orientation
Vertical or Horizontal

Product Code	System Type
ENVI100	enviro+ 100 Push Fit Assembly (no insert)

Product Code	Media Type	Sediment	Chlorine Reduction	Lead Reduction	Colour End Cap	Colour Netting
22011569	Sediment (5m)	✓	✗	✗	White Plug	N/A
22000434	Carbon Block (1m)	✓	✓	✗	Black Plug	N/A
22000435	Carbon Block with Phos (1m)	✓	✓	✗	Black Plug	N/A
22001391	Silverised Carbon (1m)	✓	✓	✗	Red	Red
22001392	Silverised Carbon with Phos (1m)	✓	✓	✗	Red	Natural
22012450	Fibredyne Block (0.5m)	✓	✓	✓	Blue	Blue
22012764	Fibredyne Block with Phos (0.5m)	✓	✓	✓	Blue	Natural
22000389	Ahlstrom (0.2m)	✓	✓	✗	Black	Black
22000393	Ahlstrom with Phos (0.2m)	✓	✓	✗	Black	Natural

Product Code	Media Type	Cyst Reduction	Anti-Microbial Resistance	Scale Protection	Colour End Cap	Colour Netting
22011569	Sediment (5m)	✗	✗	✗	White Plug	N/A
22000434	Carbon Block (1m)	✗	✗	✗	Black Plug	N/A
22000435	Carbon Block with Phos (1m)	✗	✗	✓	Black Plug	N/A
22001391	Silverised Carbon (1m)	✓	✓	✗	Red	Red
22001392	Silverised Carbon with Phos (1m)	✓	✓	✓	Red	Natural
22012450	Fibredyne Block (0.5m)	✓	✓	✗	Blue	Blue
22012764	Fibredyne Block with Phos (0.5m)	✓	✓	✓	Blue	Natural
22000389	Ahlstrom (0.2m)	✓	✗	✗	Black	Black
22000393	Ahlstrom with Phos (0.2m)	✓	✗	✓	Black	Natural

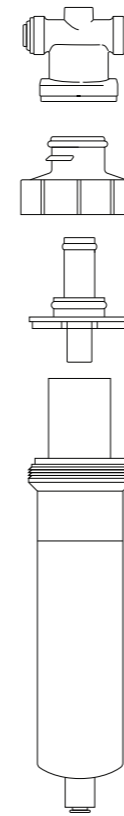
m = micron rating



ENVI200 Range: Versatile Solutions for Commercial and Residential Applications

Designed for residential and commercial use, ENVI200 filter housings offer versatile solutions. ENVI200 carbon refills, with or without Slowphos® media, work well in situations where it's important to prevent scale build up. This helps protect the dispensing equipment and saves on maintenance costs.

- ✓ Commercial and residential suitability.
- ✓ Effective removal of contaminants, chemicals, and Particulates.
- ✓ Industry-standard water quality.
- ✓ Low maintenance and sustainability focus.



Housing Construction
FDA approved polypropylene with 10% talc

Head Options
¼ Turn fit head with ¼ or 3/8 Quick connects

Max Operating Pressure
8.5 Bar / 120 psi

Water inflow temperature range
4°C - 40°C / 39°F - 104°F

Micron Rating
Depending on Media - Range from 0.2 to 5 micron

Dimensions
265mm H x 75mm W

Media Type
Carbon media with or without Slowphos® beads

Capacity
Dependant on media choice : 1,100 Litres to 19,000 litres

Operating Temperature range
4°C - 40°C / 39°F - 104°F

Flow Rate
1.9 lpm / 0.5 USG per minute

Weight dry, wet
0.4kg, 0.5kg / 0.8lbs, 1.1lbs approx.

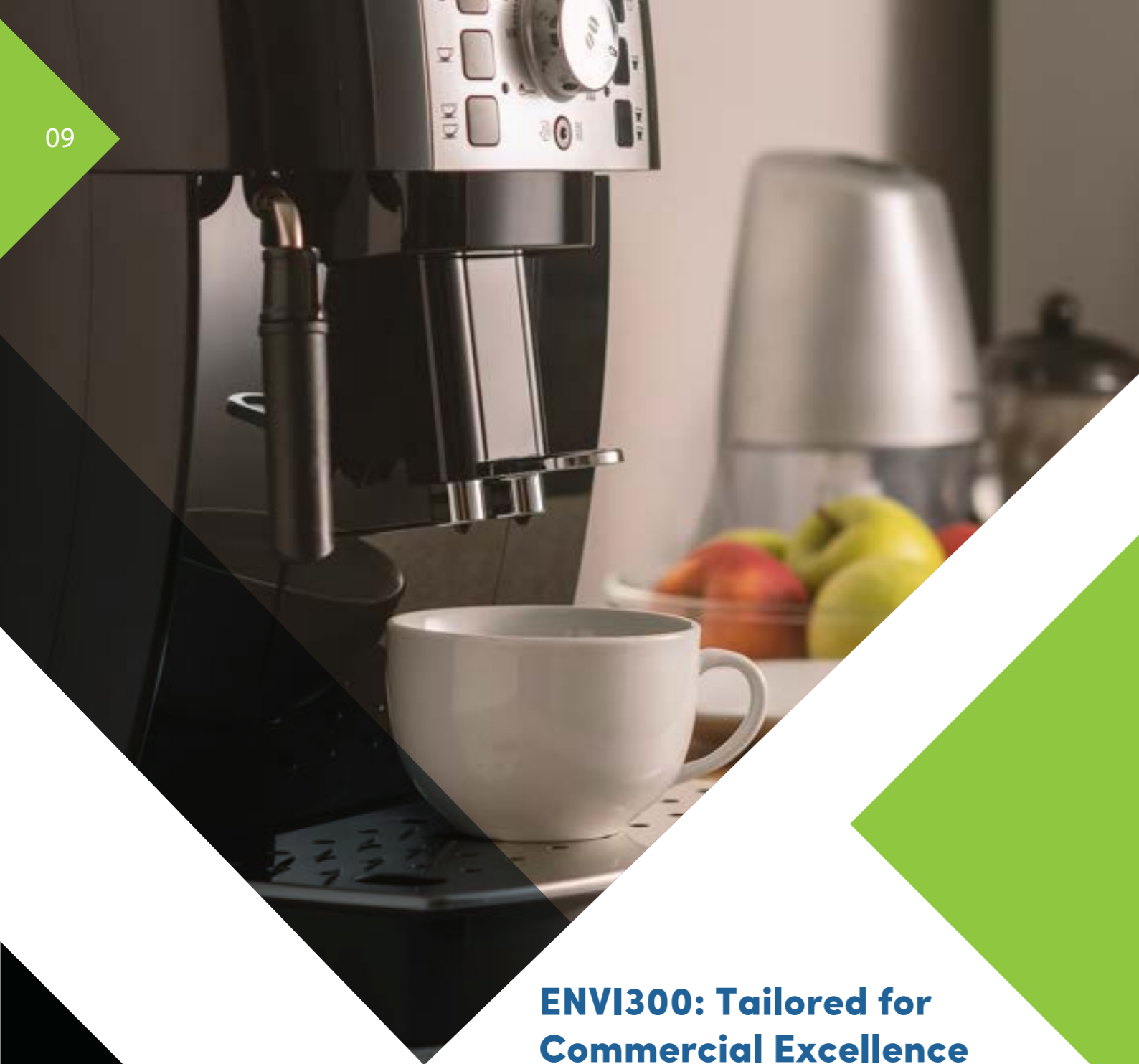
Mounting Orientation
Vertical or Horizontal

Product Code	System Type
ENVI20014	enviro+ 200 System + 1/4" PF Head (no insert)
ENVI20038V	enviro+ 200 System + 3/8" Head (no insert)

Product Code	Media Type	Cyst Reduction	Chlorine Reduction	Lead Reduction	Colour End Cap	Colour Netting
22011569	Sediment (5m)	✓	✗	✗	White Plug	N/A
22000434	Carbon Block (1m)	✓	✓	✗	Black Plug	N/A
22000435	Carbon Block with Phos (1m)	✓	✓	✗	Black Plug	N/A
22001391	Silverised Carbon (1m)	✓	✓	✗	Red	Red
22001392	Silverised Carbon with Phos (1m)	✓	✓	✗	Red	Natural
22012450	Fibre-dyne Block (0.5m)	✓	✓	✓	Blue	Blue
22012764	Fibre-dyne Block with Phos (0.5m)	✓	✓	✓	Blue	Natural
22000389	Ahlstrom (0.2m)	✓	✓	✗	Black	Black
22000393	Ahlstrom with Phos (0.2m)	✓	✓	✗	Black	Natural

Product Code	Media Type	Cyst Reduction	Anti-Microbial Resistance	Scale Protection	Colour End Cap	Colour Netting
22011569	Sediment (5m)	✗	✗	✗	White Plug	N/A
22000434	Carbon Block (1m)	✗	✗	✗	Black Plug	N/A
22000435	Carbon Block with Phos (1m)	✗	✗	✓	Black Plug	N/A
22001391	Silverised Carbon (1m)	✓	✓	✗	Red	Red
22001392	Silverised Carbon with Phos (1m)	✓	✓	✓	Red	Natural
22012450	Fibre-dyne Block (0.5m)	✓	✓	✗	Blue	Blue
22012764	Fibre-dyne Block with Phos (0.5m)	✓	✓	✓	Blue	Natural
22000389	Ahlstrom (0.2m)	✓	✗	✗	Black	Black
22000393	Ahlstrom with Phos (0.2m)	✓	✗	✓	Black	Natural

m = micron rating



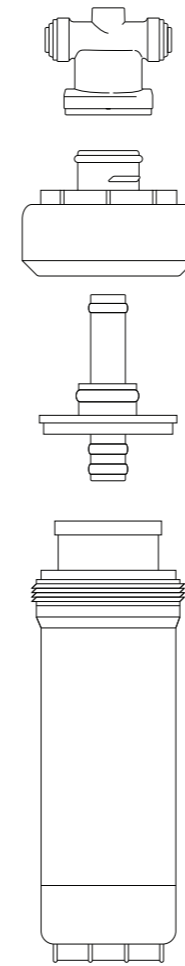
ENVI300: Tailored for Commercial Excellence

Crafted specifically for commercial applications, ENVI300 offers versatile solutions with carbon filter refills and ion exchange cartridges. It excels in removing contaminants and reducing scale, making it a cost-effective choice for the food service industry.

Available in two forms:

- Carbon Filter Refills: These carbon-based refills are designed to eliminate chlorine taste, odours, and offensive contaminants, delivering impeccable water quality.
- Ion Exchange Resin Cartridge: Ideal for hot or boiling water applications, ENVI300 reduces scale and hardness, safeguarding dispensing equipment and lowering maintenance costs.

- ✓ Commercial-grade performance.
- ✓ Chlorine and odour removal.
- ✓ Prevents scal build up.



Housing Construction

FDA approved polypropylene with 10% talc

Capacity

Dependant on media choice :
Carbon 13,125 Litres to 67,000 Ltres

Operating Temperature range

4°C - 40°C

Flow Rate

Max. 9.45 lpm

Weight dry, wet

0.4kg, 0.5kg / 0.8lbs, 1.1lbs approx.

Mounting Orientation

Vertical or Horizontal

Media Type

Carbon or Ion Exchange resin based

Max Operating Pressure

8.5 Bar / 120 psi

Water inflow temperature range

4°C - 40°C

Micron Rating

Depending on choice - Range
0.02 to 5 micron

Dimensions

309mm H x 75mm W

Product Code	System Type
ENVI30014	enviro+ 300 System + 1/4" PF Head (with scale removal insert)
ENVI30038V	enviro+ 300 System + 3/8" PF Head (with scale removal insert)

Product Code	Media Type	Sediment	Chlorine Reduction	Lead Reduction
22000427	Carbon Block (5m)	✓	✓	✗
22012595	Carbon Block with Phos (5m)	✓	✓	✗
22000560	Fibre-dyne Block (0.5m)	✓	✓	✓
22000561	Fibre-dyne Block with Phos (0.5m)	✓	✓	✓
22000547P	Resin/Carbon Riser (1m)	✓	✓	✗

Product Code	Media Type	Cyst Reduction	Anti-Microbial Resistance	Scale Protection
22000427	Carbon Block (5m)	✗	✗	✗
22012595	Carbon Block with Phos (5m)	✗	✗	✓
22000560	Fibre-dyne Block (0.5m)	✓	✓	✗
22000561	Fibre-dyne Block with Phos (0.5m)	✓	✓	✓
22000547P	Resin/Carbon Riser (1m)	✓	✗	✓

m = micron rating

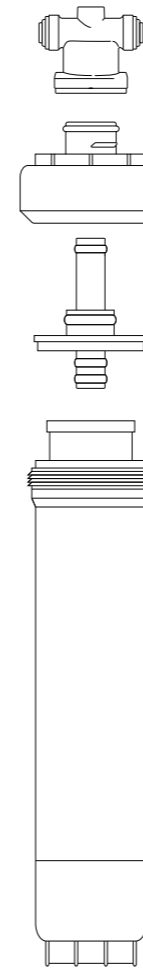


ENVI500 Range: Specialized Commercial Solutions

ENVI500, tailored for commercial use, offers carbon filter refills or ion exchange cartridges to remove contaminants. It's especially suitable for hot water applications, minimizing scale and maintenance costs, making it an excellent choice for boiling water tanks and coffee machines.

- Carbon Filter Refills: These specialized carbon-based refills are designed to eliminate chlorine taste, odours, and offensive contaminants.
- Ion Exchange Resin Cartridge: Ideal for hot or boiling water applications, the ENVI500 reduces scale and hardness.

- ✓ Tailored for commercial use.
- ✓ Chlorine and odour removal.
- ✓ Prevents scale build up.
- ✓ Ideal for boiling water tanks, coffee machines, steam ovens, and more.



Housing Construction
FDA approved polypropylene with 10% talc

Capacity
Dependant on media choice :
Carbon 25,000 Litres to 126,000 Ltres

Operating Temperature range
4°C - 40°C

Flow Rate
Max. 9.45 lpm

Dimensions
309mm H x 75mm W

Media Type
Carbon or Ion Exchange resin based

Max Operating Pressure
8.5 Bar / 120 psi

Water Inflow Temperature Range
4°C - 40°C

Micron Rating
Depending on choice - Range
0.02 to 5 micron

Mounting Orientation
Vertical or Horizontal

Product Code	System Type
ENVI50014*	enviro+ 500 System + 1/4PF Head (with scale removal insert)
ENVI50038*	enviro+ 500 System + 3/8PF Head (with scale removal insert)
ENVI50038V**	enviro+ 500 System + 3/8PF Head (with scale removal insert)
ENVI500CARBU	enviro+ 500 System + 3/8PF Head (with carbon only insert)

Product Code	Media Type	Sediment	Chlorine Reduction	Lead Reduction
22000427	Carbon Block (5m)	✓	✓	✗
22000554	Fibre dyne Block (0.5m)	✓	✓	✓
22000557P	Resin/Carbon Riser (1m)	✓	✓	✗

Product Code	Media Type	Cyst Reduction	Anti-Microbial Resistance	Scale Protection
22000427	Carbon Block (5m)	✗	✗	✗
22000554	Fibre dyne Block (0.5m)	✓	✓	✗
22000557P	Resin/Carbon Riser (1m)	✗	✗	✓

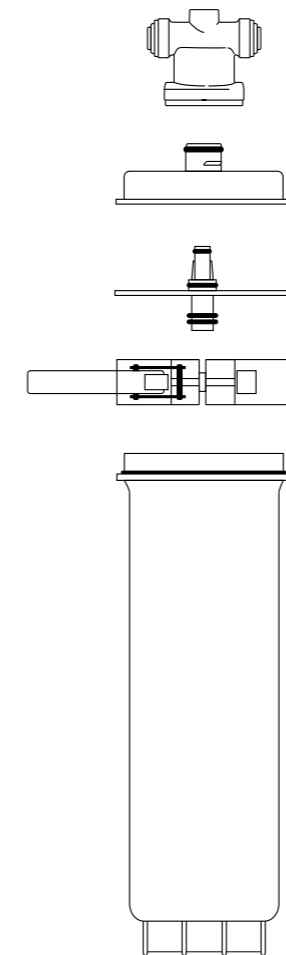
m = micron rating



ENVI600 Range: Specialized Scale Control

ENVI600 has been specifically manufactured for hot water dispensing equipment that requires high-capacity scale control and chlorine reduction, without severely reducing the pH value of the feedwater. ENVI600 is an excellent choice in Vending & traditional espresso Machines as well as combination ovens and water boilers.

- ✓ Tailored for commercial use.
- ✓ Chlorine reduction - taste and odour enhancement.
- ✓ Prevents scale build up.
- ✓ Ideal for boiling water tanks, coffee machines, steam ovens and more.



Housing Construction
FDA approved polypropylene with 10% talc

Capacity
6000 litres

Operating Temperature range
4°C - 40°C

Flow Rate
Max. 6 lpm

Dimensions
465mm H x 175mm W

Media Type
Carbon & Ion Exchange resin based

Max Operating Pressure
8.5 Bar / 120 psi

Water Inflow Temperature Range
4°C - 40°C

Micron Rating
1 micron

Mounting Orientation
Vertical

Product Code	System Type
ENVI60038*	enviro+ 600 system + 3/8PF Head (with scale removal insert)
ENVI60038V**	enviro+ 600 system + 3/8PF Head (with scale removal insert)

*30% fixed bypass filter head

**Variable bypass filter head

Product Code	Media Type	Sediment	Chlorine Reduction	Scale Protection
600CART	Resin/Carbon Riser (1m)	✓	✓	✓

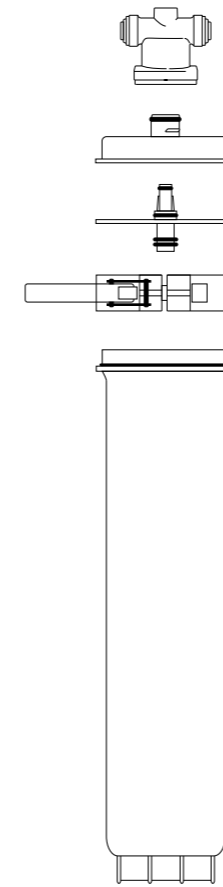
m = micron rating



ENVI800 Range: Specialized Scale Control

ENVI800 has been specifically manufactured for hot water dispensing equipment that requires high capacity scale control and chlorine reduction, without severely reducing the pH value of the feedwater. ENVI800 is an excellent choice in high usage areas with Vending & traditional espresso Machines as well as combination ovens and water boilers.

- ✓ Tailored for commercial use.
- ✓ Chlorine reduction - taste and odour enhancement.
- ✓ Prevents scale build up.
- ✓ Ideal for boiling water tanks, coffee machines, steam ovens and more.



Housing Construction
FDA approved polypropylene with 10% talc

Capacity
10000 litres

Operating Temperature range
4°C - 40°C

Flow Rate
Max. 6 lpm

Dimensions
590mm H x 175mm W

Media Type
Carbon & Ion Exchange resin based

Max Operating Pressure
8.5 Bar / 120 psi

Water Inflow Temperature Range
4°C - 40°C

Micron Rating
1 micron

Mounting Orientation
Vertical

Product Code	System Type
ENVI80038*	enviro+ 800 System + 3/8PF Head (with scale removal insert)
ENVI80038V**	enviro+ 800 System + 3/8PF Head (with scale removal insert)

*30% fixed bypass filter head

**Variable bypass filter head

Product Code	Media Type	Sediment	Chlorine Reduction	Scale Protection
800CART	Resin/Carbon Riser (1m)	✓	✓	✓

m = micron rating



**DUAL TEST STRIP -
ALKALINITY & PH 0 - 360 PPM**

- ✓ Dual Test Strips for Water.
- ✓ pH and Alkalinity Testing.
- ✓ Hassle-Free Water Quality Assessment.
- ✓ Safe and Convenient Testing Strips.



**DIGITAL WATER METER &
TEST KIT 3/8" BSPTM X 3/8"
FEMALE**

- ✓ Accurate Flow Measurement.
- ✓ Easy Installation.
- ✓ Dual Test Strips for Water.
- ✓ pH and Alkalinity Testing.
- ✓ Audiable Alarm.



**JOHN GUEST
FITTINGS, TUBING & HOSES**

- ✓ Versatile John Guest Connectors.
- ✓ LLDPE Tubing Available In Various Colours.
- ✓ A Wide Range Available from Stock.



**INTEGRAL MAINS
INSTALL VALVES**

- ✓ High Quality Custom Built Mains Water Installation Kits.
- ✓ Double Check Valve & Pressure Regulation.
- ✓ Isolation Valve for Quick Shut-Off.
- ✓ A Variety of Specifications Available.



AQUA DOSA SANITISER

- ✓ Hydrogen Peroxide Formula.
- ✓ 3% & 6% Concentrations Available.
- ✓ For Use In Water Systems and Still Water Environments.
- ✓ Leaves No Taste or Odour.
- ✓ Kills Bacteria and Removes Biofilm.



**PROFOS
DESCALER**

- ✓ Phosphoric Acid-based.
- ✓ High Activity Liquid Descaler.
- ✓ Supplied in 4x5 Litre Drums.

Turning
Waste into
Resources

Reduce,
Reuse,
Recycle



Sustainability in action

With waste materials ranking as a paramount environmental concern for everyone, Aqua Cure has proactively implemented a filter recycling service to recover and repurpose valuable components from used water filter cartridges.



How does the process operate?

It's straightforward: Send us your used filter cartridges, and we will handle the rest. We extract all the reusable components and transform the remaining plastic into plastic pellets primed for recycling into other plastic products.



CONTACT

☎ Call 01704 516916
@ or email sales@aquacure.co.uk

📍 Aqua Cure Ltd, Units 3A & 3B,
Dakota Business Park, Dakota Way,
Burscough, Lancashire, L40 8AF

We are open:
Monday to Thursday: 8:30am – 5:30pm
Friday: 8:30am – 5:00pm

 **AQUA CURE**
WATER PURITY EXPERTS

🖱 www.aquacure.co.uk